

# PROFESSIONAL CARBON FIBER MANUFACTURER



XC CARBON FIBER CO.,LIMITED

FOCUS ON CARBON FIBER PRODUCTS SINCE 2008





# ABOUT US



Xccarbon founded in 2008. Have over 5000 Square meters work shop .  
Now xccarbon is the biggest carbon fiber factory in south of China .  
Serve over 100 countries clients and enjoy good reputation .

Main product

Carbon fiber sheets

Carbon fiber tubes

Carbon customized products

Carbon plate and tube cnc processing

Carbon drag washer

Carbon sport products

Product mainly use in

UAV drone aircraft parts

RC racing sim racing

Auto equipment and medical parts

Electronic products

Sports parts , musical parts

All material use imported carbon fiber fabric and produce as per ISO-9001  
-2008 rule .Xccarbon now become the high-tech enterprise with more than  
20 patents . We help global clients to do OEM and branded carbon products.



# FOUR LEADING

MATERIALS

SCALE

MANAGEMENT

EQUIPMENT



**QUALITY ASSURANCE:**  
Raw materials  
QC inspection



**R & D  
TEAM**



**QUALITY  
INSPECTION**



## **TEAM SHOW**

**SALES  
TEAM**



**PRODUCTION  
TEAM**





# PROCESS ENGINEERING DRAWING

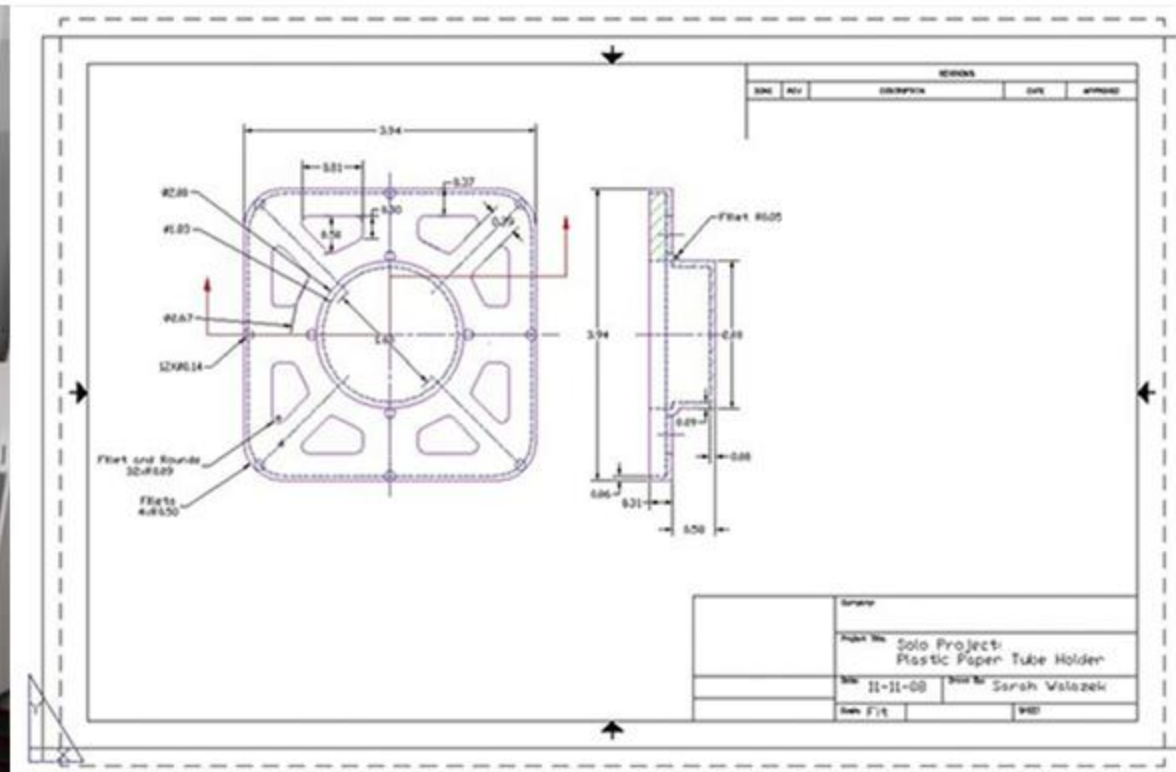
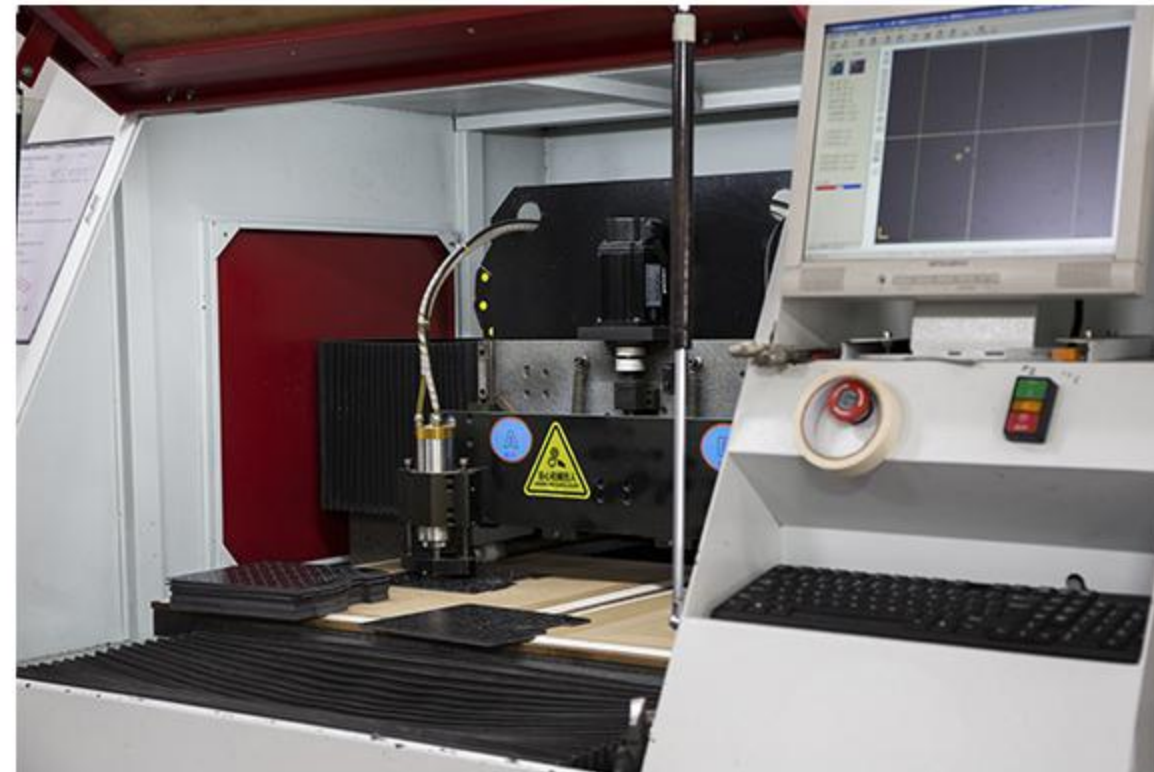
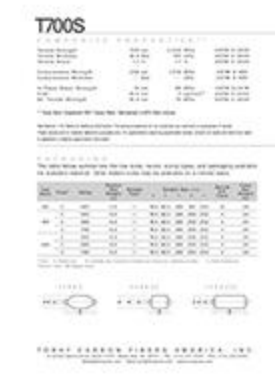
Offer us CAD DXF or DWG file For any carbon cnc processing parts.

Offer us 3D IGS , STP or Step file for molding carbon products.

Offer us PDF and AI File for any logo printing .

If no drawing ability ,offer us real product we will help to make drawing.

Professional engineer team will help you make perfect products .





A background image showing three call center agents in profile, wearing headsets and white shirts, working in a professional setting. The image is partially obscured by a yellow text box on the left.

## **AFTER SALES SERVICE**

1. 95% on time delivery , less nor no defect goods ,safety packing .
2. All goods need 3 steps QC inspection before ship to our Clients
3. help to tracking the goods after ship out until customer get the goods safely
4. Report to us for any quality within 10 days after receiving the goods
5. We offer 24 hours reply for any quality issue and 48 hours give solution .
6. We help to give some market information for any new products or new market



# FACTORY DISPLAY





# FACTORY DISPLAY





# FACTORY DISPLAY







## WHY USE CARBON FIBER?

The carbon fiber of the company is prefabricated with carbon fiber and resin imported from Japan Toray and Taiwan Taili. Its fiber volume content is greater than 65% and its performance exceeds the national standard.

Features: 1. Carbon fiber board yarn tension is uniform, maintaining the strength of carbon fiber and stable product performance.

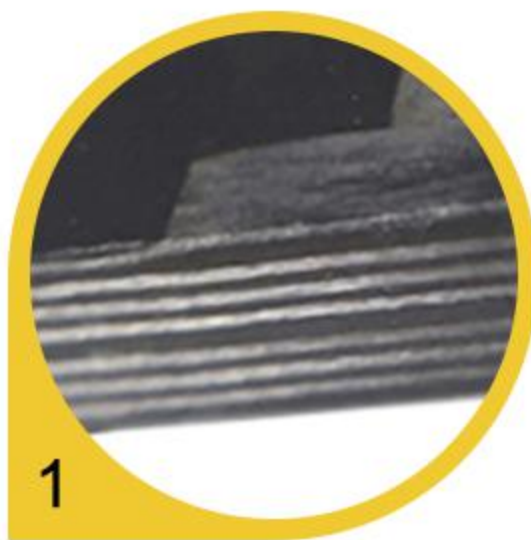
2. The tensile strength is more than 10 times that of ordinary diamond material, the elastic modulus is better than that of steel, and has excellent creep resistance and earthquake resistance.
3. Light weight, good flexibility, higher than light weight, only one fifth of the weight of steel, with high toughness and can be rolled.
4. Good durability and corrosion resistance, acid and alkali resistance.  
The corrosion of salt and atmospheric environment does not require regular maintenance.
5. Good flexibility, good flatness, high surface gloss and elegant appearance.



# CARBON FIBER SHEET DIFFERENT SIDES

Commonly used carbon sheet.  
Two surfaces are made  
of 3K carbon  
and the middle is made of  
unidirectional carbon.

**3K+UD+3K**



1

The strength is lower than that of full carbon,  
which can reduce the cost.  
The two surfaces  
are made of 3K carbon cloth and the middle  
is made of fiberglass.

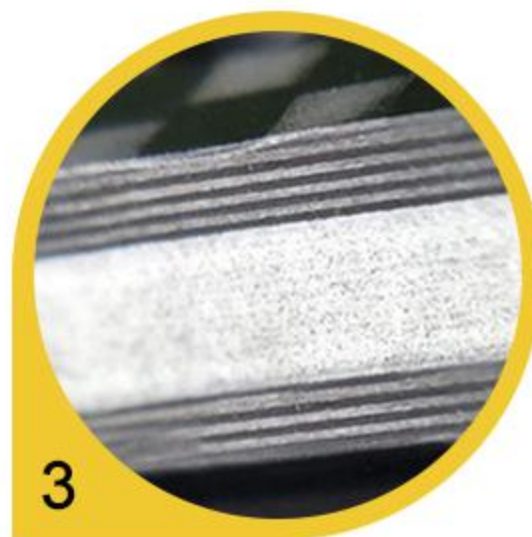
**3K+fiberglass+3K**



2

Lightweight carbon sheet. The specific gravity is less  
than that of pure carbon fiber,  
and the weight is about 70% of that of pure carbon fiber.  
The outer steel is flexible  
and has certain toughness. High tensile strength,  
high axial strength, high modulus, no creep.

**3K+foam+3K**



3

High strength, high hardness.  
With conductivity,  
used for medical equipment  
and music equipment,  
The cost is slightly higher

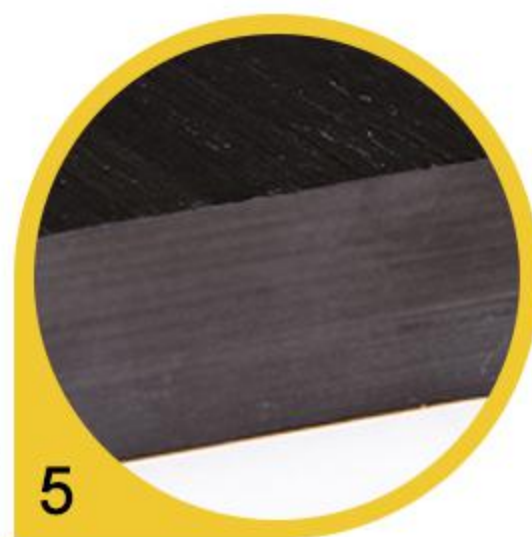
**3K+3K+3K**



4

High strength,  
unidirectional surface texture

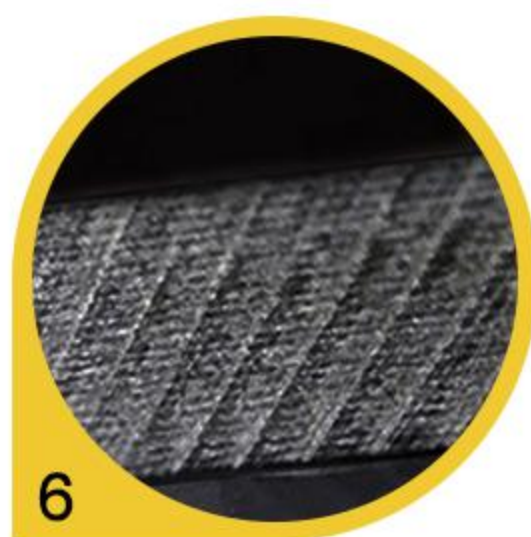
**UD+UD+UD**



5

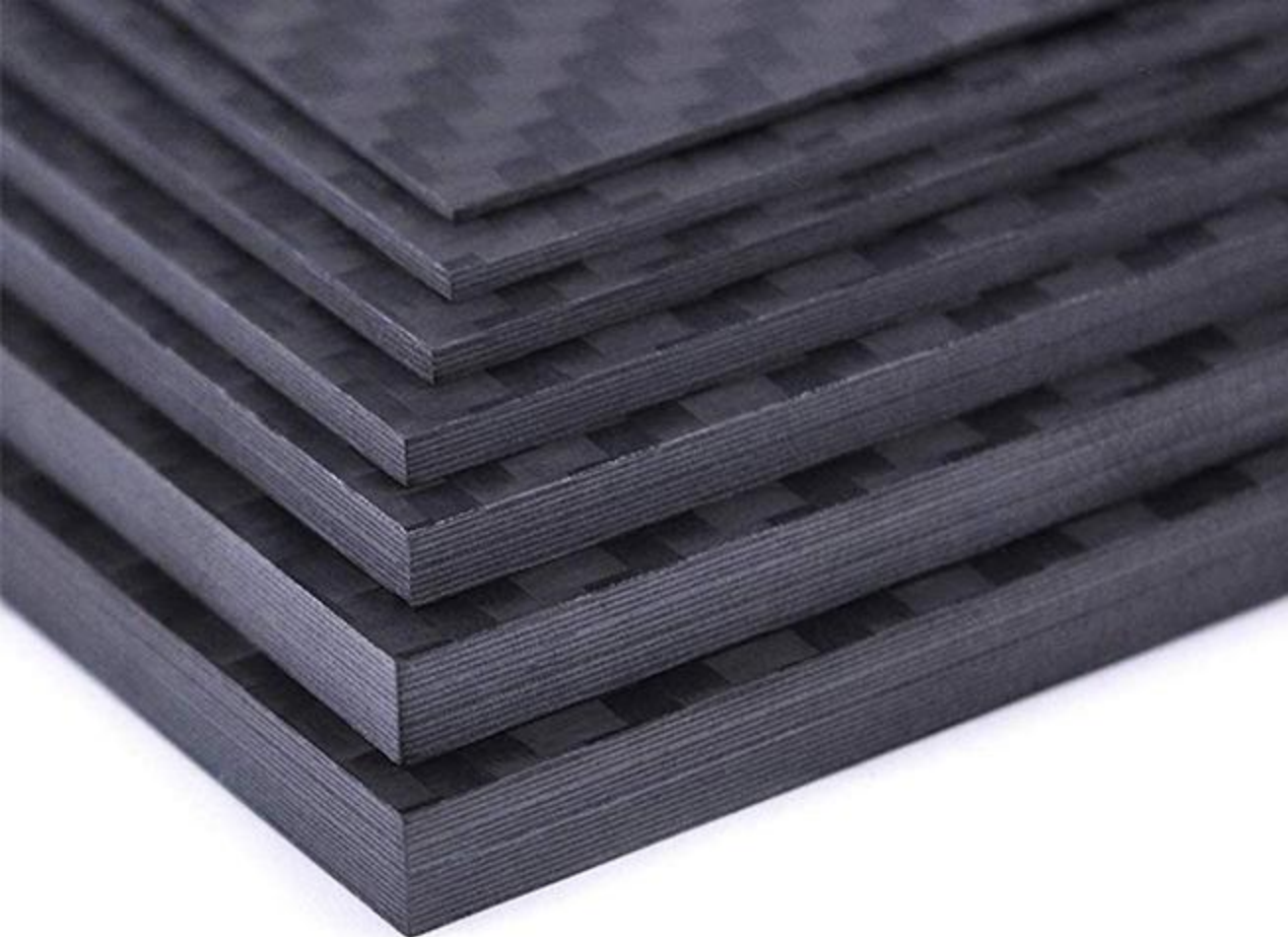
Insulation, black fiberglass, also known as black FR-4,  
with flat black surface lines,  
good gloss and good mechanical properties.  
It is commonly used for RC mold cars,  
ships, drone and ship molds

**Black Fiberglass**



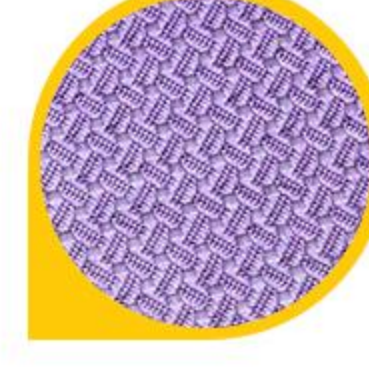
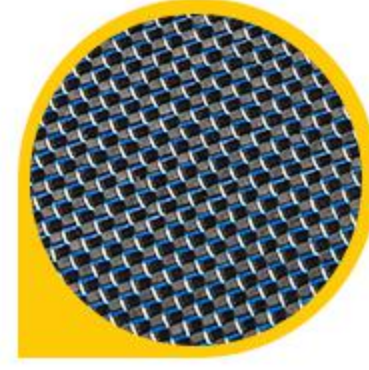
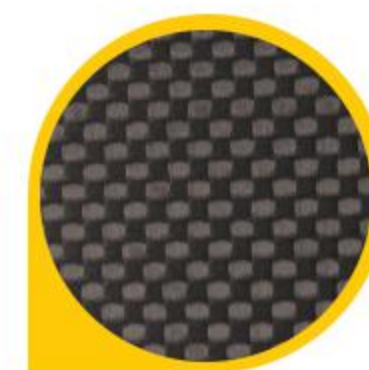
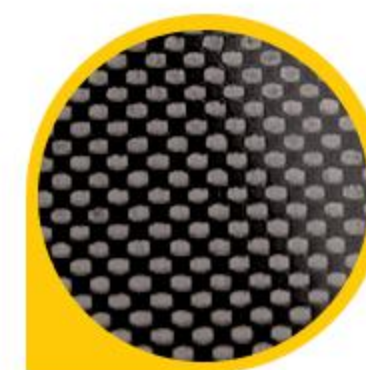
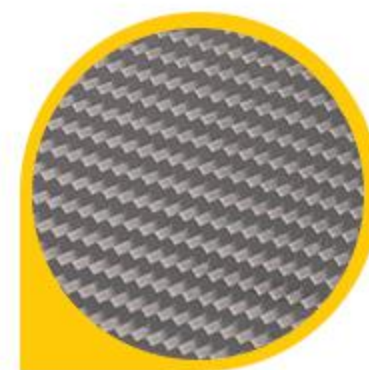
6





CUSTOMIZED THICKNESS

DIFFERENCE SURFACE



Size (mm)	Thickness (mm)	Texture size	Texture	Surface	Color
400*500	0.2-60mm	1k	Plain	Glossy	Black common
500*500	(0.5/0.8	1.5k	Twill	Matte	Silver,
500*600	/1.0/1.2/	3k	Unidirectional		Red,
500*1000	1.5/2/2.5/	6k	Diamond		Golden,
600*1000	3.0/3.5/4.0	12k	texture		Blue,
1000*1200	/5.0/6.0)	Common			Colorful
or	or custom	3K			Golden silk
custom					

1. 100% carbon fiber, imported Toray raw materials
2. High strength, light weight
3. Good flatness and elegant appearance
4. Good corrosion resistance and flexibility





Printing



Hole drilling



Custom size

1. High strength and light weight.
2. Long service life, corrosion resistance, low density.
3. Stable , conductivity, thermal conductivity, small coefficient of thermal expansion
4. Self lubrication, energy absorption, earthquake resistance, high modulus, high creep
5. High temperature resistance, corrosion resistance and wear resistance.

Pattern	Surface	Line	Color	Material	Carbon Content	ID Size	Wall thickness size	Length	Application
Twill, Plain	Glossy, Matte	3K Or 1K, 1.5K, 6K	Black, Gold, Silver, Red, Blue, Green (Or With Color Silk)	Japan Toray Carbon Fiber Fabric+Resin	68%	6-60 mm Or custom	0.5mm 0.75mm 1mm 1.5mm 2 mm 3 mm 4 mm	1000mm, 1200mm, 1500mm. Or custom	1. Aerospace, Helicopters Model Drone, UAV, FPV, RC Model Parts 2. Manufacture Fixtures And Tooling, Industrial Automation 3. Sports Equipment, Musical Instruments, Medical Device 4. Building Construction Repair And Strengthening 5. Car Interior Decoration Parts, Art Products 6. Others

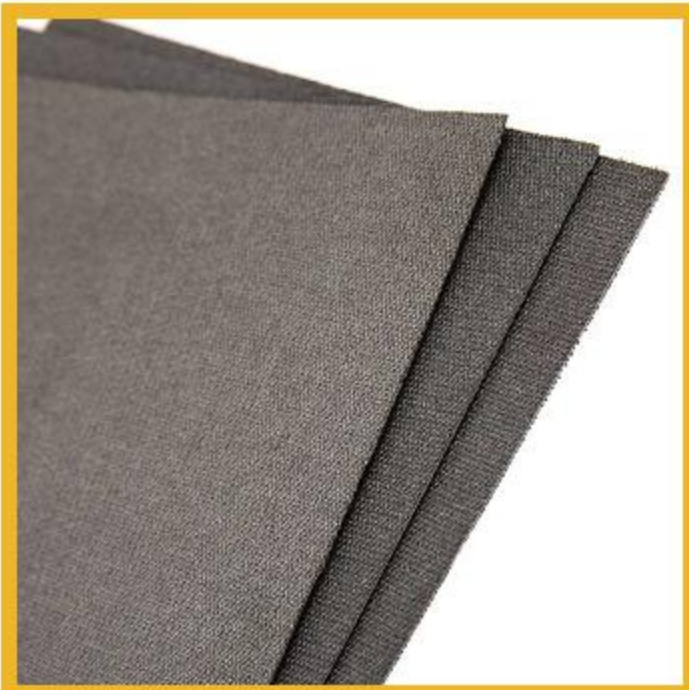
**CUSTOM CARBON FIBER TUBE**



# CARBON FIBER FISHING GEAR INDUSTRY



Drag washer cutting sheet ▲



Drag washer sheet ▲



Rocker handle ▲

Imported carbon fiber materials, brake pads and rocker arms, more stable and strong.

The brake pad texture is beautiful, beautiful and practical.  
The maximum braking force can reach 35LB.

The braking performance of the brake pad will not be reduced after soaking in seawater.

Introduction:  
it is made of fireproof carbon fiber cloth and reinforced glass fiber board.  
The thickness is usually 0.5-1.5mm.  
It is used in the fishline wheel to produce braking effect.







## CARBON FIBER KEYBOARD PARTS

Good texture, smooth, voice crisp

It makes the appearance thinner,  
lightweight and easy to carry

Heat resistance.  
From the perspective  
of heat dissipation,  
carbon fiber is weaker than metal,  
but stronger than plastic.

Fixed the overall design.



1. Forged keyboard case
2. Fiberglass keyboard case
3. 3K keyboard





# CARBON FIBER FPV PARTS

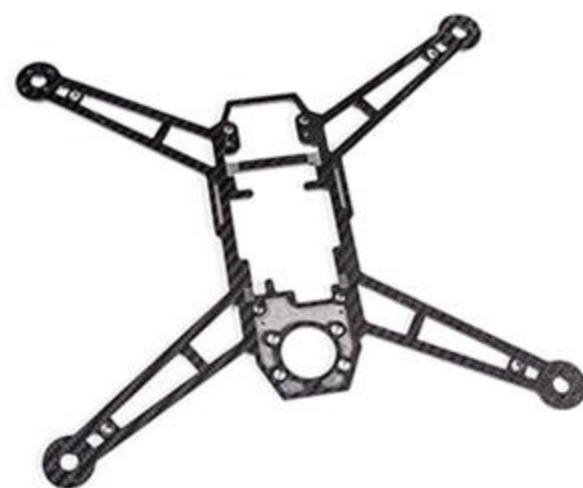
Carbon fiber can not only reduce the weight of the center plate of the arm,  
but also meet the requirements of strength and stiffness.  
Increased service life.



FPV frame



FPV parts



FPV arm



FPV arm



FPV frame



# CARBON FIBER UAV/DRONE PARTS

- 1. Carbon fiber has high strength, 10 times the rigidity of steel and half the weight of aluminum, which ensures the strength of UAV, lighter weight and longer endurance time.
- 2. Reduce the load and make the UAV more rigid and solid.
- 3. Carbon fiber composite has stable chemical structure and is resistant to acid, alkali, salt fog and other complex environments. It can be used for a long time without worrying about rust and corrosion,
- 4. Low coefficient of thermal expansion, good material stability, relatively low maintenance cost, easy storage and transportation and long service life.
- 5. Good safety, good impact resistance and high designability. The high strength of carbon fiber can resist the strong resistance during flight. If you accidentally make mistakes, you don't have to worry about damage if you hit other items.



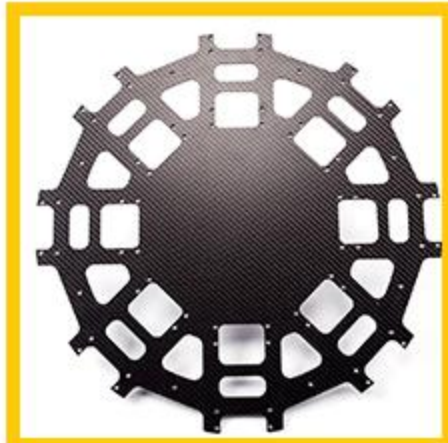
UAV parts



UAV frame



UAV frame



UAV Center plate







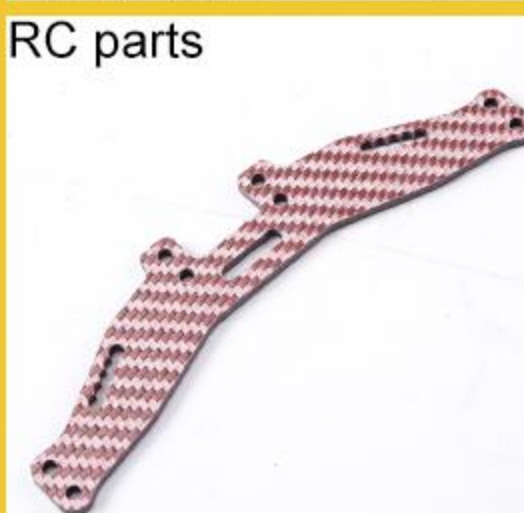
## CARBON FIBER RC PARTS



RC chassis



RC chassis



RC parts



RC parts

High strength, 10 times the rigidity of steel and half the weight of aluminum.  
Durable and wear-resistant





# CARBON FIBER CAR/AUTO PARTS

Carbon fiber covers almost all the body and parts except electrical appliances and glass, reducing the weight and fuel consumption of the car

Reduce tail gas emission and increase loading capacity

Improve impact resistance, improve safety performance and provide strong guarantee



Auto parts



Auto panel



Auto interior parts



Auto interior parts







Honeycomb plate



Carbon shin guards



Bicycle parts

## CARBON FIBER SPORTS PARTS

Wear resistance and good impact resistance  
Lightweight and easy to carry

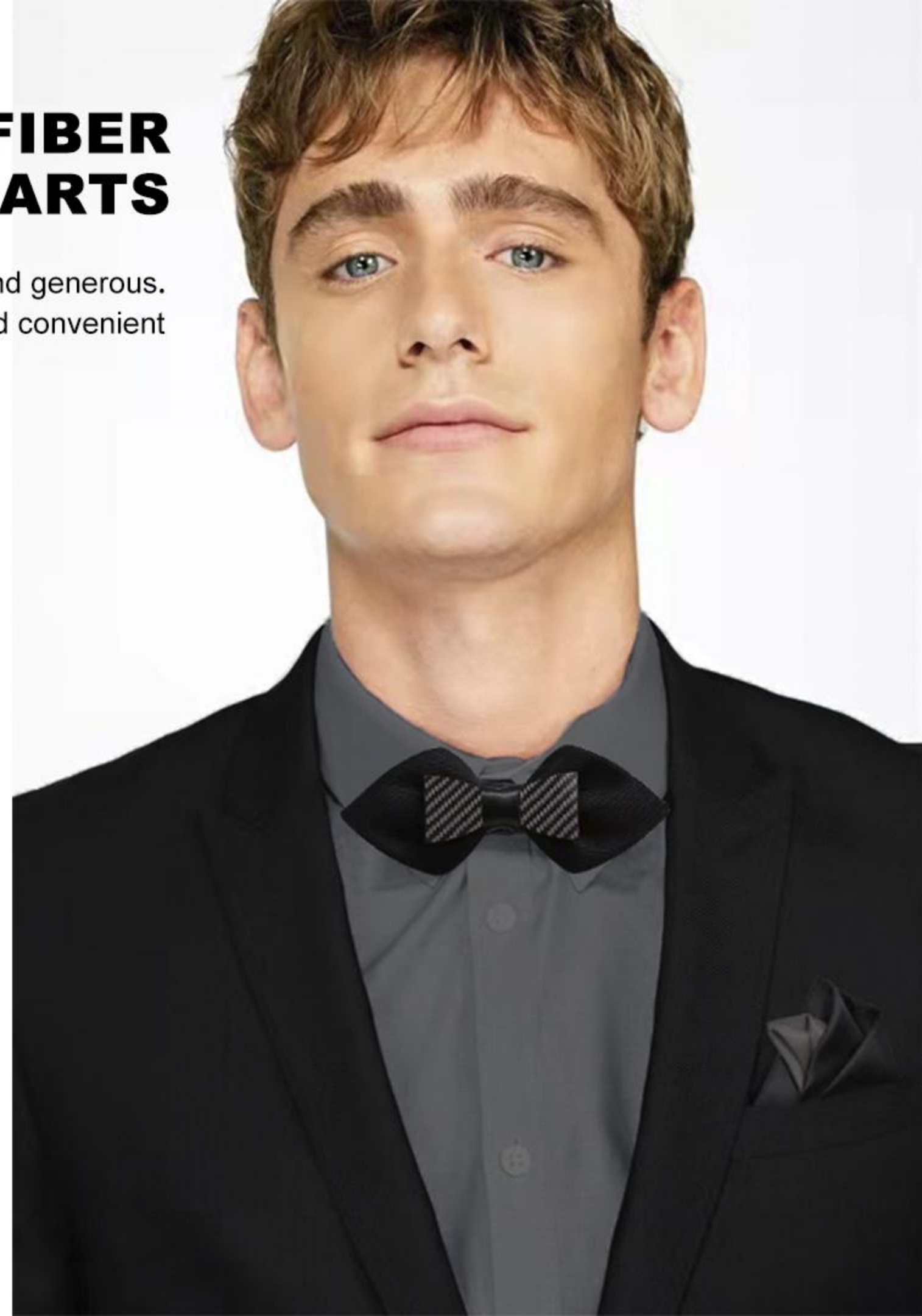


# **CARBON FIBER CLOTHING/ SHOES PARTS**

Corrosion resistant, beautiful and generous.  
Lightweight and convenient



◀ Carbon Insole





# CARBON FIBER LUGGAGE PARTS

Convenient Light, beautiful  
and fashionable



Pendant



Luggage tag



Zipper bag

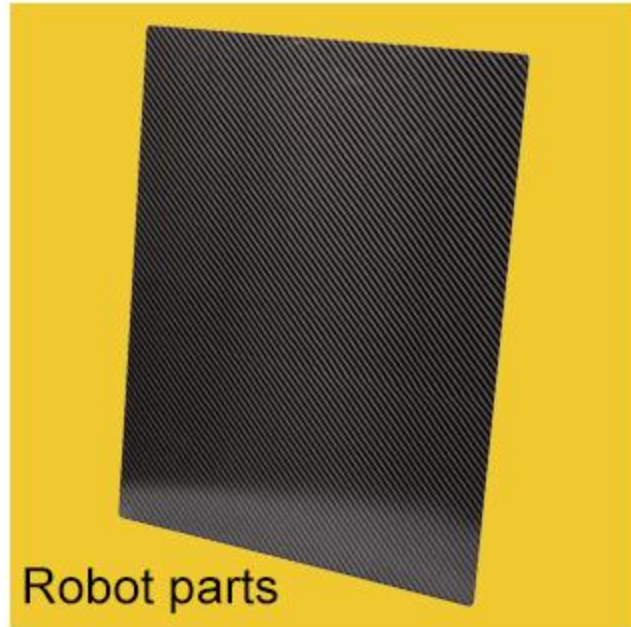


Zipper bag





# CARBON FIBER ROBOT PARTS



Robot parts



Robot arm

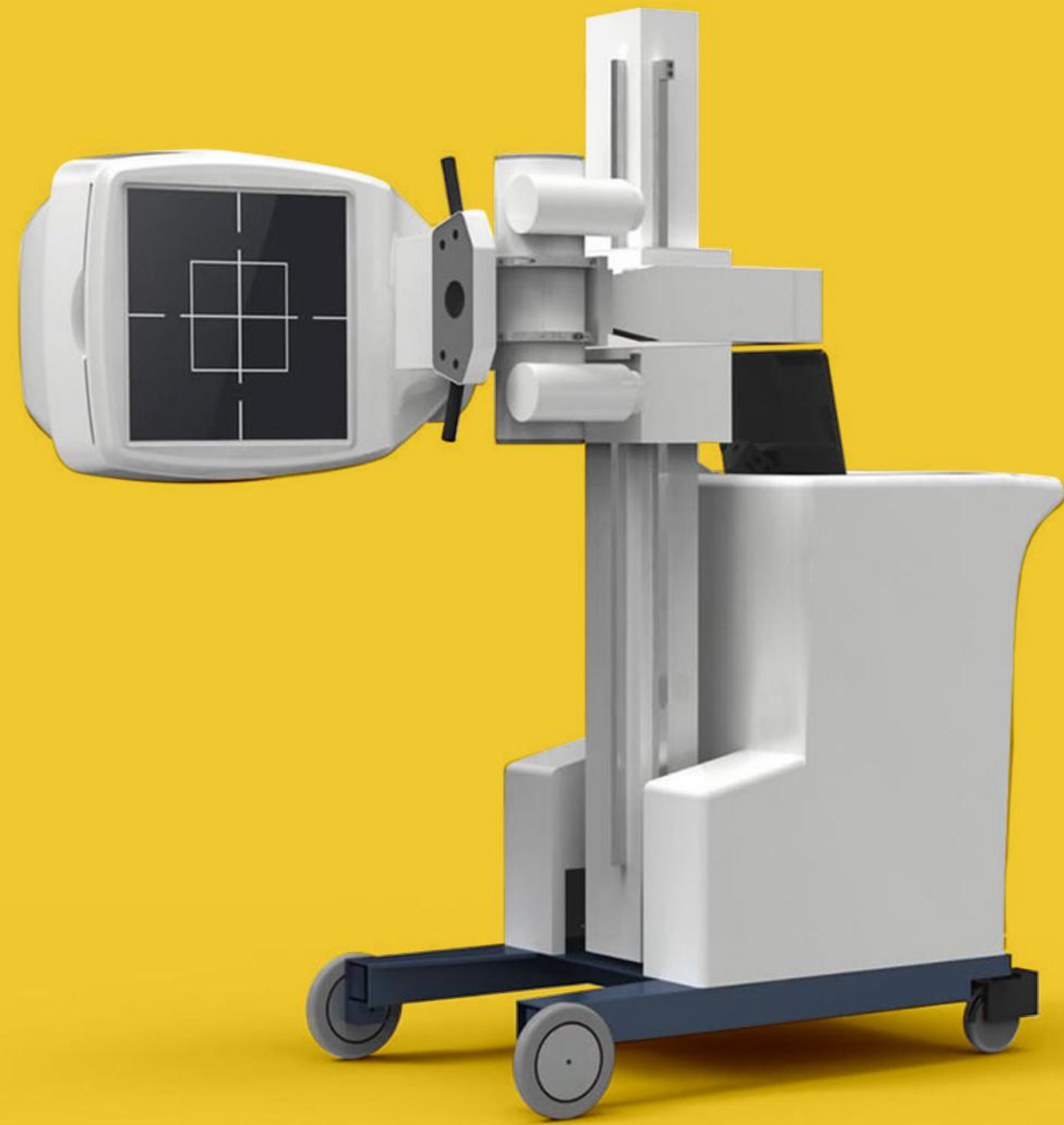


Robot arm

As a moving part, carbon fiber manipulator has many advantages in specific gravity, creep, strength, including cost and so on



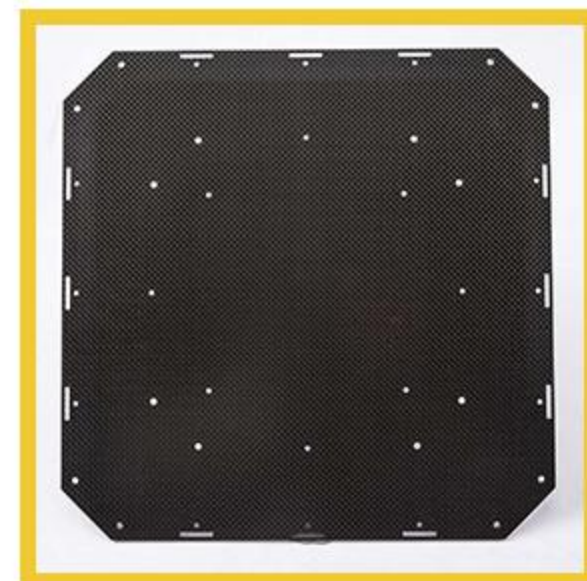




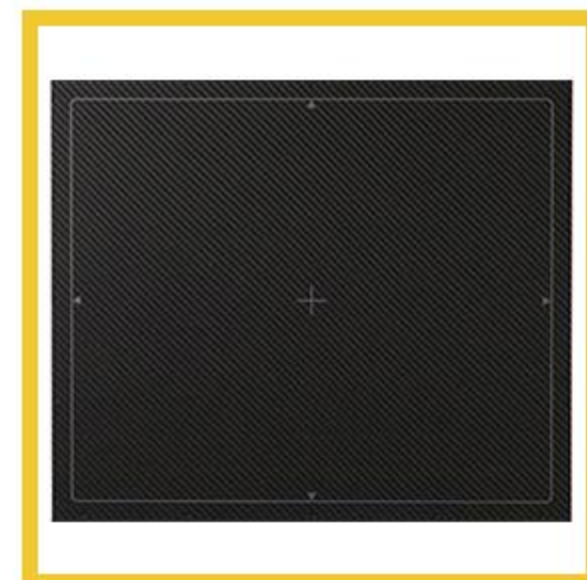
# CARBON FIBER MEDICAL EQUIPMENT PARTS

High strength, light weight, tensile creep

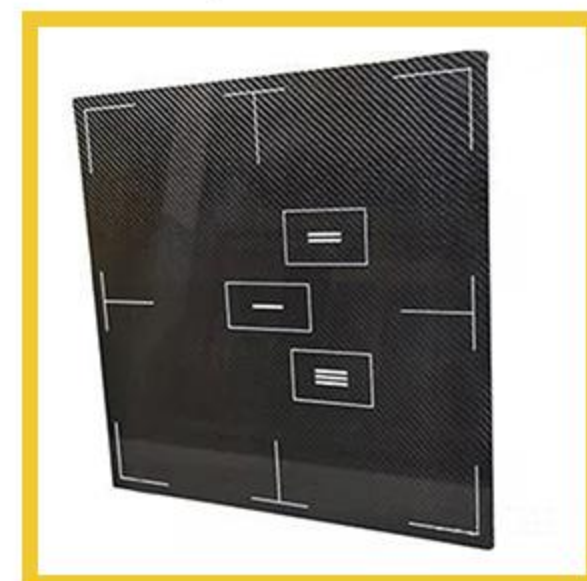
It has little influence on X-ray penetration,  
no interference on nuclear magnetic resonance  
imaging,  
conductive but non-magnetic.  
Comply with national standards



Medical parts



Medical parts



Medical parts





## CARBON FIBER SIM RACING PARTS

Sim Racing  
Panels



Carbon fiber, corrosion resistance, wear resistance  
Not easy to deform and has good compressive strength  
Beautiful appearance





## CARBON FIBER MUSIC PARTS

Guitar  
Pick



Music  
equipment  
parts

Carbon fiber lightweight, high strength  
Strong ability to shield interference  
Reduce energy lingering,  
The music played through it is clear and clean,  
with good sense of hierarchy and very little distortion

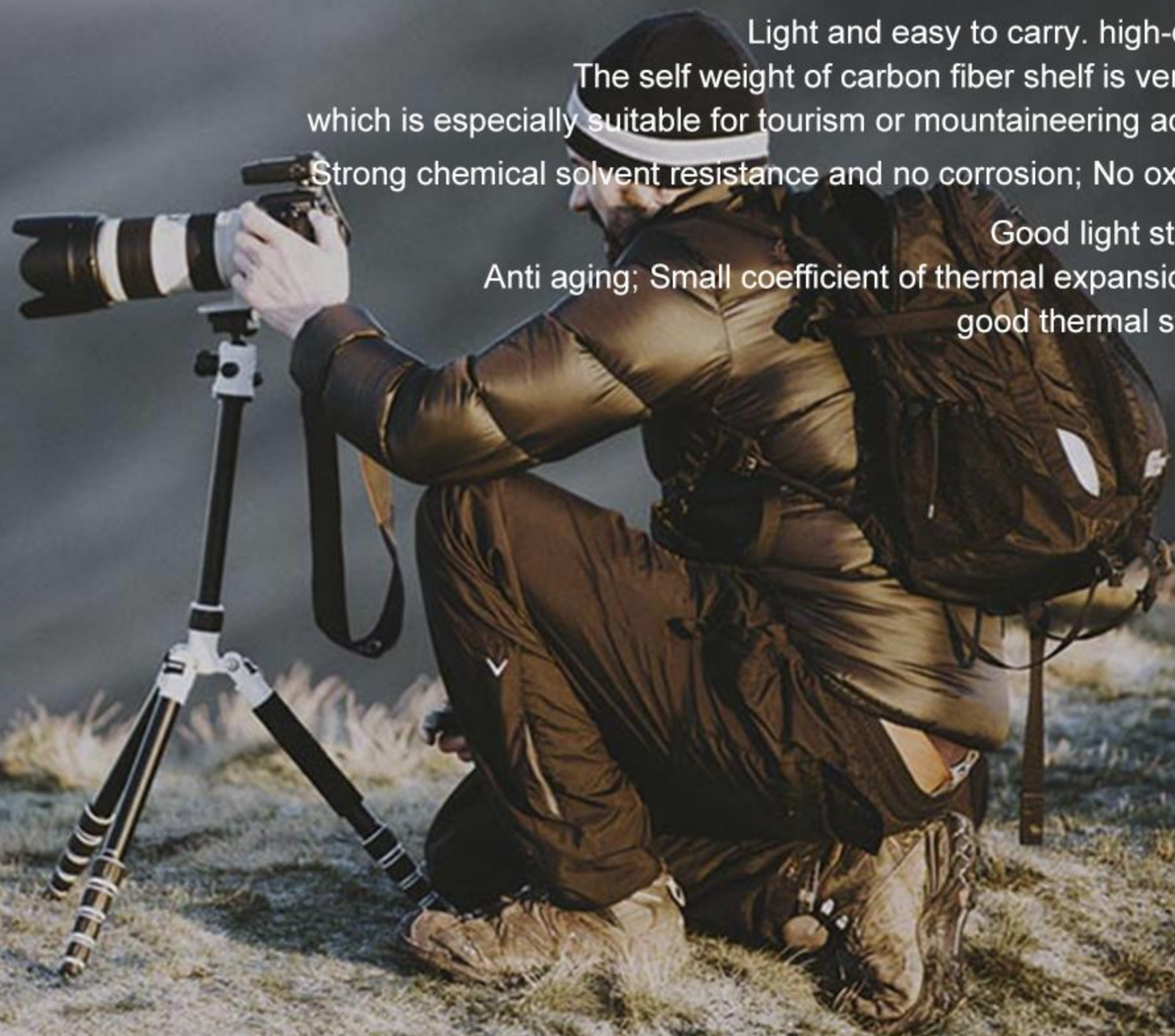


High strength,  
good shockproof performance and good stability when taking photos

Light and easy to carry. high-quality.  
The self weight of carbon fiber shelf is very light,  
which is especially suitable for tourism or mountaineering activities

Strong chemical solvent resistance and no corrosion; No oxidation

Good light stability;  
Anti aging; Small coefficient of thermal expansion and  
good thermal stability.



## CARBON FIBER PHOTOGRAPHY PARTS

Tripod parts



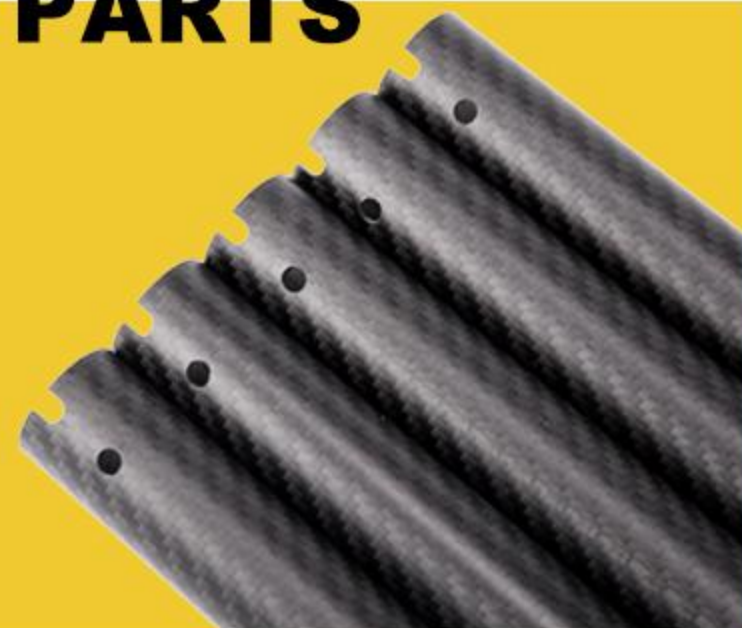
Shading plate







## **CARBON FIBER PARTS**





# CUSTOMIZE SERVICES AND PROCESSES



Engineering department checks and confirms the quotation



Production



Packaged delivery



Customer sends the design document STP / step / IGS, quantity and requirements.



Customer confirms the quotation, arrange payment or deposit.



Quality inspection



Cargo transportation





## CONTACT US

*Add:* Third industrial Area Xiajiangcheng Gaobu town Dongguan Guangdong China

*Tel:* 0086-769-88516671

*Fax:* 0086-769-81307699

*E-mail:* [info@xccarbonfiber.com](mailto:info@xccarbonfiber.com)

*Website:* [www.xccarbonfiber.com](http://www.xccarbonfiber.com)

[www.xccarbon.com](http://www.xccarbon.com)

*Facebook/Instagram/Twitter/Youtube:* XC Carbon Fiber

